



NUMERI E PRIME OPERAZIONI

**PRESCOLARE E CLASSE
PRIMA
MATERIALE GRATUITO**

Nicole Howard

Tracing practice on a grid background. The top three rows show tracing for the letter 'N': the first row has 11 slanted lines (one solid, ten dashed); the second row has 11 'N' shapes (one solid, ten dashed); the third row has 11 zigzag lines (one solid, ten dashed). Below are four matching exercises: a trash can, a helicopter, a cat, and a butterfly, each followed by an equals sign and a box containing a starting dot and a dashed line indicating the first stroke.

The grid is divided into several sections for handwriting practice:

- Top Row:** A solid number 2 followed by six dashed number 2s for tracing.
- Second Row:** A solid number 2 followed by four dashed number 2s for tracing.
- Third Row:** A mathematical equation $1 + 1 = 2$ and an illustration of two cherries plus another cherry, representing the number 2.
- Fourth Row:** Dashed versions of the equation $1 + 1 = 2$ and the cherry illustration for tracing.
- Fifth Row:** Two visual discrimination tasks. The first shows two umbrellas followed by an equals sign and a square box containing a dashed number 2 with a black dot at its starting point. The second shows two sailboats followed by an equals sign and a square box containing a black dot.

The grid contains the following elements:

- Row 1: A solid number 3 followed by six dashed number 3s.
- Row 2: A solid number 3 followed by six dashed number 3s.
- Row 3: A solid number 3 followed by six dashed number 3s.
- Row 4: A dashed number 1, a dashed number 2, a dashed number 3, and an illustration of three cherries.
- Row 5: A dashed number 1, a dashed number 1, a dashed number 1, and a dashed number 3.
- Row 6: An illustration of three ladybugs followed by an equals sign and a square box containing a dashed number 3 with a black dot at the top left.
- Row 7: An illustration of three swans followed by an equals sign and a square box containing a black dot.

The grid contains the following elements from top to bottom:

- Row 1: A solid number 4 followed by five dashed number 4s for tracing.
- Row 2: A solid number 4 followed by five dashed number 4s for tracing.
- Row 3: Four turtles with plus signs between them.
- Row 4: Dashed numbers 1, 2, 3, and 4 for tracing.
- Row 5: Four candies for counting.
- Row 6: Four stars followed by an equals sign and a box containing a dashed number 4 with a starting dot.
- Row 7: Four fish followed by an equals sign and a box containing a starting dot.

The grid contains the following tracing elements:

- Row 1: Solid 5, followed by 5 dashed 5s.
- Row 2: Solid 5, followed by 5 dashed 5s.
- Row 3: Dashed 1, dashed 4, dashed 5, dashed 5.
- Row 4: Dashed 3, dashed 2, dashed 5.

To the right of the grid are 5 pear illustrations.

At the bottom, there are two domino-like shapes with dots and a tracing guide for the number 5:

- Left: A vertical rectangle divided horizontally. The top half is black with 3 white dots. The bottom half is black with 2 white dots.
- Middle: An equals sign.
- Right: A vertical rectangle with a dashed 5 and a black dot at the top right corner.
- Far Left: A vertical rectangle divided horizontally. The top half is black with 4 white dots. The bottom half is black with 1 white dot.
- Middle: An equals sign.
- Far Right: A vertical rectangle with a black dot at the top right corner.

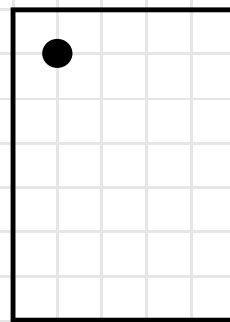
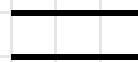
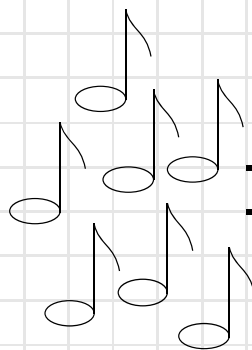
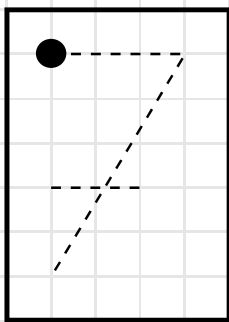
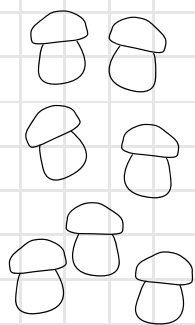
The grid contains the following elements:

- Row 1: A solid number 1, followed by five dashed number 1s for tracing.
- Row 2: A solid number 2, followed by five dashed number 2s for tracing.
- Row 3: A solid number 3, followed by five dashed number 3s for tracing.
- Row 4: A solid number 4, followed by five dashed number 4s for tracing.
- Row 5: A solid number 5, followed by five dashed number 5s for tracing.
- Row 6: A solid number 6, followed by five dashed number 6s for tracing.
- Row 7: A solid number 7, followed by five dashed number 7s for tracing.
- Row 8: A solid number 8, followed by five dashed number 8s for tracing.
- Row 9: A solid number 9, followed by five dashed number 9s for tracing.
- Row 10: A solid number 0, followed by five dashed number 0s for tracing.
- Row 11: A solid number 1, followed by five dashed number 1s for tracing.
- Row 12: A solid number 2, followed by five dashed number 2s for tracing.
- Row 13: A solid number 3, followed by five dashed number 3s for tracing.
- Row 14: A solid number 4, followed by five dashed number 4s for tracing.
- Row 15: A solid number 5, followed by five dashed number 5s for tracing.
- Row 16: A solid number 6, followed by five dashed number 6s for tracing.
- Row 17: A solid number 7, followed by five dashed number 7s for tracing.
- Row 18: A solid number 8, followed by five dashed number 8s for tracing.
- Row 19: A solid number 9, followed by five dashed number 9s for tracing.
- Row 20: A solid number 0, followed by five dashed number 0s for tracing.

At the bottom of the grid, there are two boxes for counting:

- Box 1: A box containing a dashed number 6 and a solid black dot. To the left of the box are six bows, with an equals sign between them and the box.
- Box 2: A box containing a solid black dot. To the left of the box are six fish, with an equals sign between them and the box.

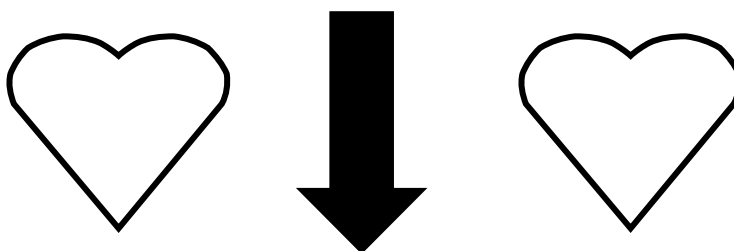
A large grid for handwriting practice. The top row contains ten diagonal dashed lines. The second row contains a solid number 7 followed by five dashed number 7s. The third row contains dashed numbers 1, 4, 6, and 7. The fourth row contains dashed numbers 5, 2, and 7. To the right of the grid is a drawing of a leaf with a stem and several berries. Below the grid is a horizontal sequence of seven circles containing the numbers 1 through 7, connected by a line.



The worksheet is divided into several sections for tracing and counting practice:

- Row 1:** A sequence of nine circles. The first is solid, and the remaining eight are dashed.
- Row 2:** A sequence of five circles. The first is solid, and the remaining four are dashed.
- Row 3:** A sequence of six figures. The first is a solid number 8, and the remaining five are dashed.
- Row 4:** A large dashed number 8 with arrows and numbers 1 through 8 indicating the stroke order for writing.
- Row 5:** A pyramid of eight circles, numbered 1 through 8 from bottom to top.
- Row 6:** An equation showing four squares in a 2x2 grid followed by an equals sign and a box containing a dashed number 8 with a black dot at the top of its upper circle.
- Row 7:** An equation showing two columns of four circles each, followed by an equals sign and a box containing a solid number 8 with a black dot at the top of its upper circle.

Grazie per avere scelto questo libro!



Se vuoi imparare le tabelline e non sai bene come fare, considera il mio libro "Impara le Tabelline con il Metodo Flessibile". Non rimarrai deluso!



Nicole Howard